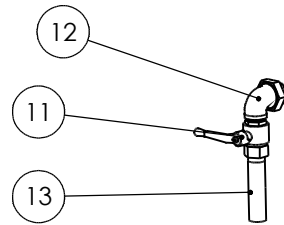
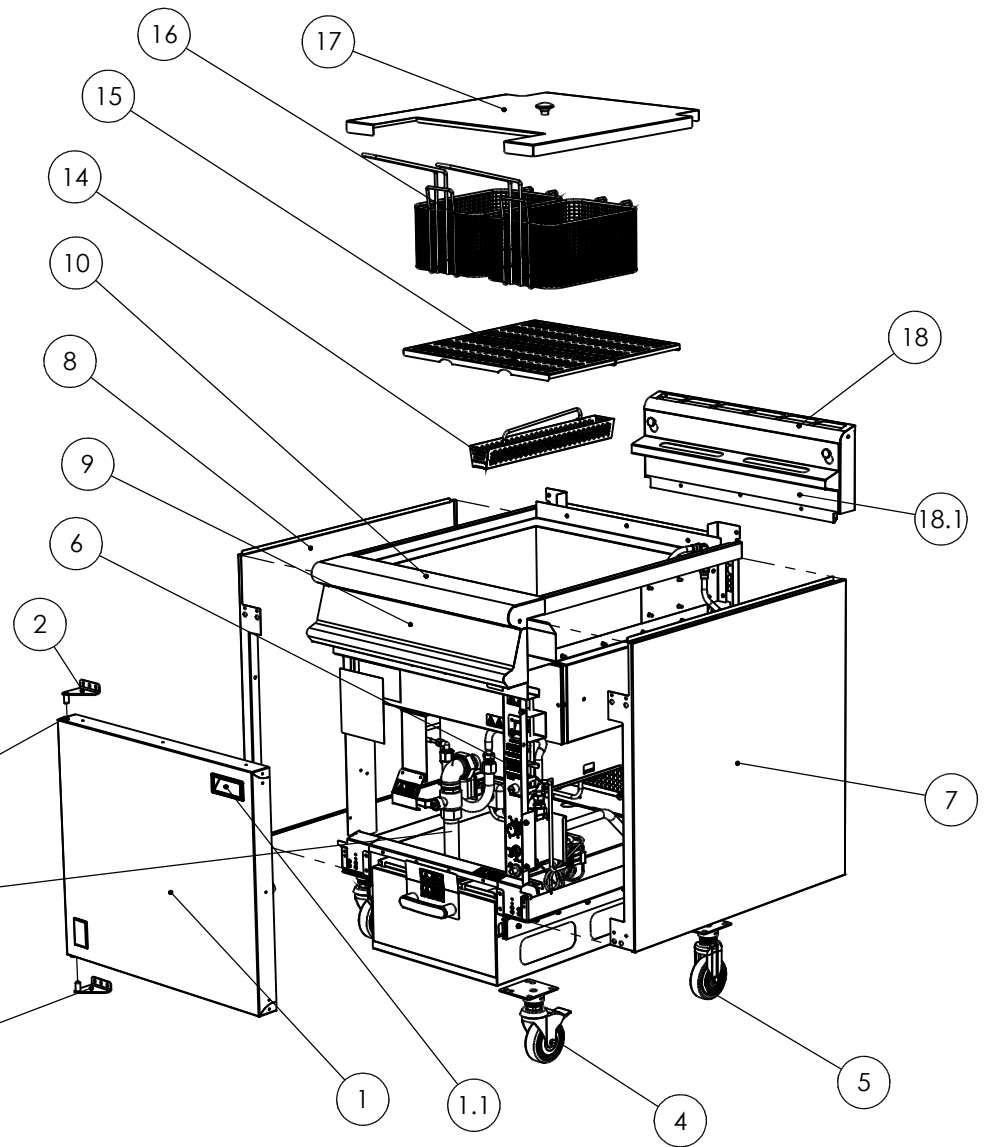


ITEM	DESCRIPTION	SPARES No
1	DOOR ASSEMBLY	535580000
1.1	DOOR HANDLE	736010020
1.2	DOOR HINGE BUSH (x 2)	536060036
2	DOOR HINGE - TOP	535200006
3	DOOR HINGE - BOTTOM	535200007
4	CASTOR - BRAKED (x 2)	536430110
5	CASTOR - FIXED (x 2)	731350014
6	CONTROLS INDICATION LABEL	535580045
7	OUTER SIDE PANEL - RH	535580002
8	OUTER SIDE PANEL - LH	535580003
9	CONTROL PANEL	535580004
10	HOB/PAN ASSEMBLY C/W INSULATION & DRAIN VALVE	535580031
11	DRAIN VALVE	535580043
12	1" UNION ELBOW	535580032
13	DRAIN PIPE	535580033
14	PAN STRAINER	535670009
15	FISH PLATE	535680005
16	BASKET	531312010
17	DUST COVER	535680044
18	FLUE ASSEMBLY	535680007
18.1	BASKET HANGER	535680008



PRODUCTION ISSUE

ISSUE	MOD No	ALTERATION	DRAWN BY	DATE
A	1715	PRODUCTION ISSUE	I.JAMES	07/09/17

IF IN DOUBT ASK
DO NOT SCALE
FIRST ANGLE PROJECTION

UNLESS OTHERWISE SPECIFIED:
DIMENSIONS ARE IN MILLIMETERS
TOLERANCES:
LINEAR: ±0.5mm
ANGULAR: ±0.5 DEG

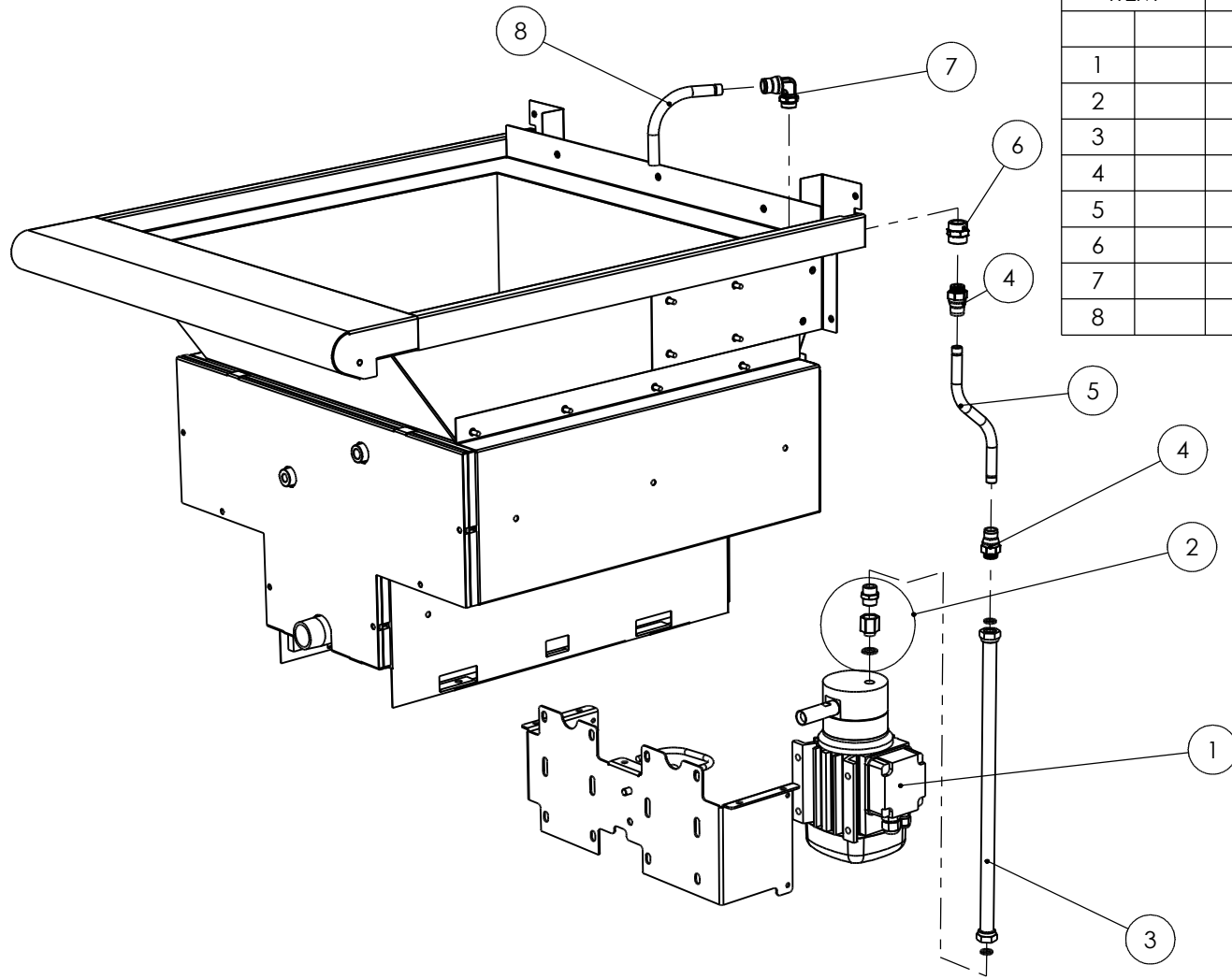
DEBUR AND
BREAK SHARP EDGES

WEIGHT: 147358.77g



DRAWN: I.JAMES	PRODUCT	G3860F FRYER	
DATE: 17/08/17	TITLE	SPARES - MAIN BODY	
SCALE: 1:10	DRAWING NUMBER	AD54753	ISSUE
MATL:	FINISH:		A
THICKNESS:	PART No:		
BIN No:			

© NO REPRODUCTION OR PUBLICATION OF THIS DRAWING MAY BE MADE AND NO ARTICLE MAY BE MANUFACTURED OR ASSEMBLED IN ACCORDANCE WITH THIS DRAWING WITHOUT PRIOR WRITTEN CONSENT. THIS PROHIBITION IS A TERM OF ANY CONTRACT RELATING TO THIS DRAWING. RIGHTS RESERVED UNDER THE COPYRIGHT ACT 1956 AS AMENDED BY THE DESIGN COPYRIGHT ACT 1968



ITEM	DESCRIPTION	SPARES No
1	OIL PUMP C/W SCREWS	535770077
2	PUMP TO PIPE FIXINGS	535770210
3	FLEXI HOSE C/W SEALS	535770111
4	PUSH IN STREIGHT FITTING 3/8" MALE	535770084
5	OIL FILTRATION PIPE	535580046
6	ADAPTOR 3/8" EQUAL FEMALE	535580048
7	PUSH IN ELBOW 3/8" MALE	533500013
8	OIL RETURN PIPE	535580047

PRODUCTION ISSUE

ISSUE	MOD No	ALTERATION	DRAWN BY	DATE
A	1715	PRODUCTION ISSUE	I.JAMES	07/09/17

IF IN DOUBT ASK
DO NOT SCALE
FIRST ANGLE PROJECTION

UNLESS OTHERWISE SPECIFIED:
DIMENSIONS ARE IN MILLIMETERS
TOLERANCES:
LINEAR: ±0.5mm
ANGULAR: ±0.5 DEG

DEBUR AND
BREAK SHARP EDGES

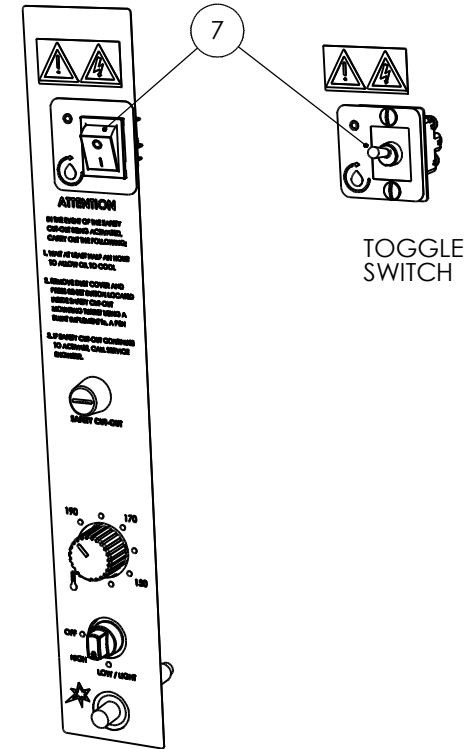
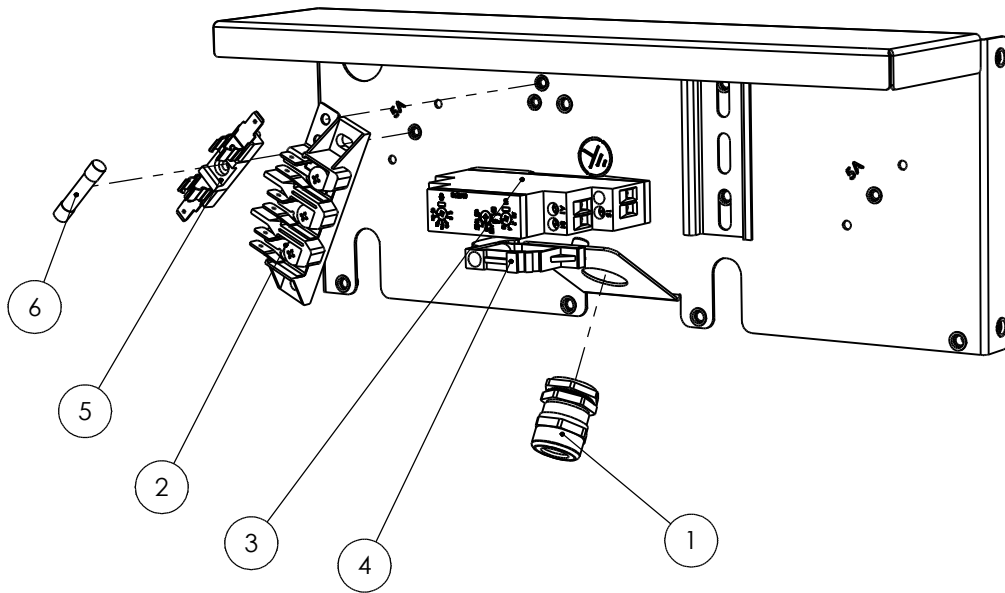
WEIGHT: 147358.77g



DRAWN: I.JAMES	PRODUCT	
DATE: 23/08/17	G3860F FRYER	
SCALE: 1:5	TITLE	
	SPARES - PUMP & FITTINGS	
MATL:	DRAWING NUMBER	ISSUE
THICKNESS:	FINISH:	AD54618
BIN No:	PART No:	A

© NO REPRODUCTION OR PUBLICATION OF THIS DRAWING MAY BE MADE AND NO ARTICLE MAY BE MANUFACTURED OR ASSEMBLED IN ACCORDANCE WITH THIS DRAWING WITHOUT PRIOR WRITTEN CONSENT. THIS PROHIBITION IS A TERM OF ANY CONTRACT RELATING TO THIS DRAWING. RIGHTS RESERVED UNDER THE COPYRIGHT ACT 1956 AS AMENDED BY THE DESIGN COPYRIGHT ACT 1968

ITEM	DESCRIPTION	SPARES No
1	MAINS CABLE GLAND	732630040
2	MAINS TERMINAL 3 WAY	732910270
3	PUMP TIMER	536470007
4	DIN RAIL STOP	535580053
5	FUSE 5A ANTI SURGE	536430009
6	FUSE HOLDER	734310510
7	TOGGLE PUMP SWITCH (PRE SEP 18)	535580055
7	ROCKER PUMP SWITCH (POST SEP 18)	535580056



PRODUCTION ISSUE

ISSUE	MOD No	ALTERATION	DRAWN BY	DATE
A	1715	PRODUCTION ISSUE	I.JAMES	07/09/17
B	8085	PUMP SWITCH SPARES No WAS 536380008	I.JAMES	16/04/18
C	8153	PUMP SWITCH REPLACED	I.JAMES	13/08/18

IF IN DOUBT ASK
DO NOT SCALE
FIRST ANGLE PROJECTION

UNLESS OTHERWISE SPECIFIED:
DIMENSIONS ARE IN MILLIMETERS
TOLERANCES:
LINEAR: ±0.5mm
ANGULAR: ±0.5 DEG

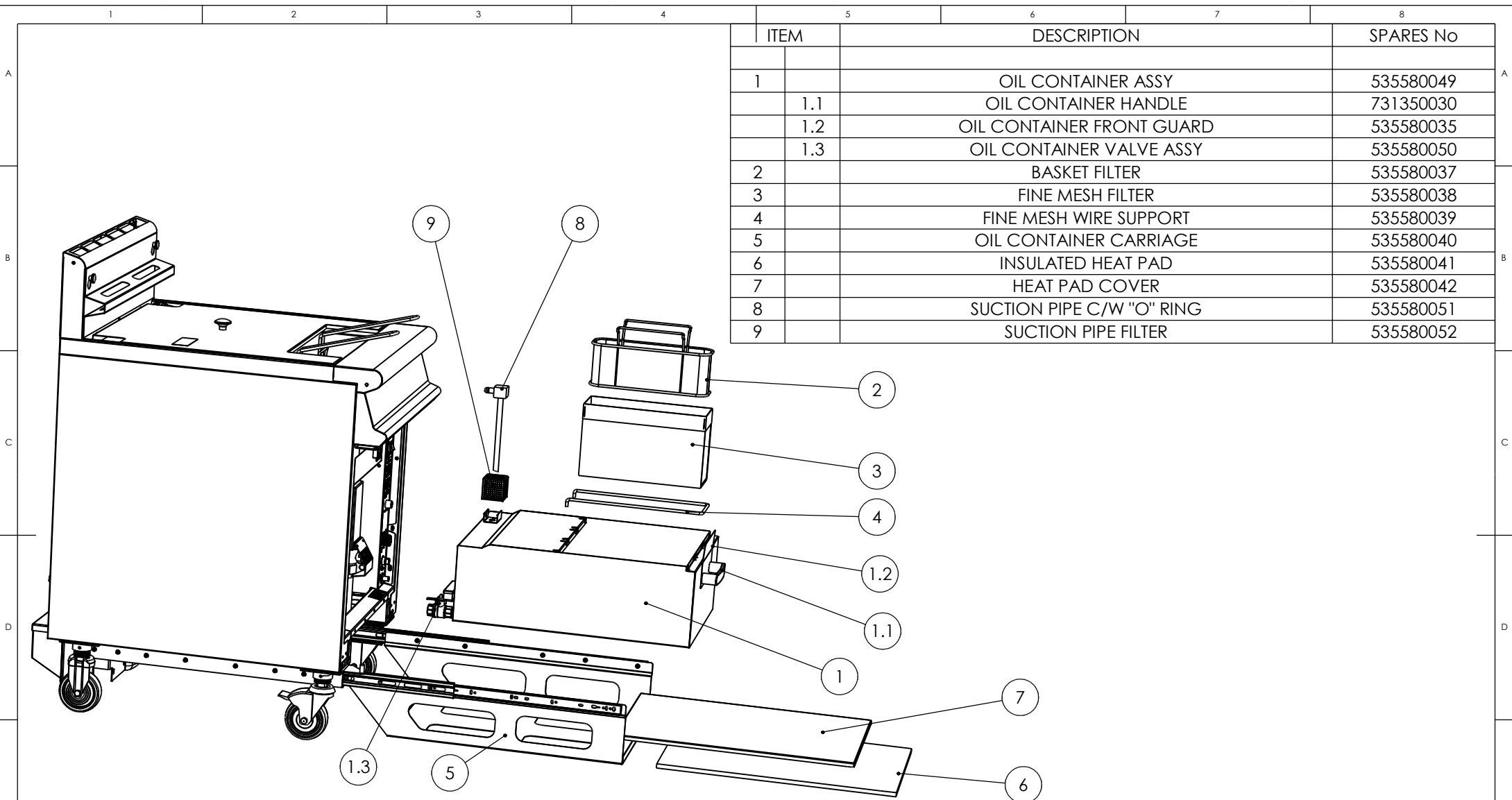
DEBUR AND
BREAK SHARP EDGES

WEIGHT: 204097.08g



DRAWN: I.JAMES	PRODUCT	
DATE: 22/08/17	G3860F FRYER	
SCALE: 1:20	TITLE	
	SPARES - PUMP ELECTRICS	
MATL:	DRAWING NUMBER	ISSUE
THICKNESS:	FINISH:	AD54619
BIN No:	PART No:	C

© NO REPRODUCTION OR PUBLICATION OF THIS DRAWING MAY BE MADE AND NO ARTICLE MAY BE MANUFACTURED OR ASSEMBLED IN ACCORDANCE WITH THIS DRAWING WITHOUT PRIOR WRITTEN CONSENT. THIS PROHIBITION IS A TERM OF ANY CONTRACT RELATING TO THIS DRAWING. RIGHTS RESERVED UNDER THE COPYRIGHT ACT 1956 AS AMENDED BY THE DESIGN COPYRIGHT ACT 1968



ITEM	DESCRIPTION	SPARES No
1	OIL CONTAINER ASSY	535580049
1.1	OIL CONTAINER HANDLE	731350030
1.2	OIL CONTAINER FRONT GUARD	535580035
1.3	OIL CONTAINER VALVE ASSY	535580050
2	BASKET FILTER	535580037
3	FINE MESH FILTER	535580038
4	FINE MESH WIRE SUPPORT	535580039
5	OIL CONTAINER CARRIAGE	535580040
6	INSULATED HEAT PAD	535580041
7	HEAT PAD COVER	535580042
8	SUCTION PIPE C/W "O" RING	535580051
9	SUCTION PIPE FILTER	535580052

PRODUCTION ISSUE

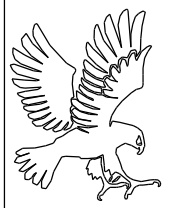
ISSUE	MOD No	ALTERATION	DRAWN BY	DATE
A	1715	PRODUCTION ISSUE	I.JAMES	07/09/17

IF IN DOUBT ASK
DO NOT SCALE
FIRST ANGLE PROJECTION

UNLESS OTHERWISE SPECIFIED:
DIMENSIONS ARE IN MILLIMETERS
TOLERANCES:
LINEAR: ±0.5mm
ANGULAR: ±0.5 DEG

DEBUR AND
BREAK SHARP EDGES

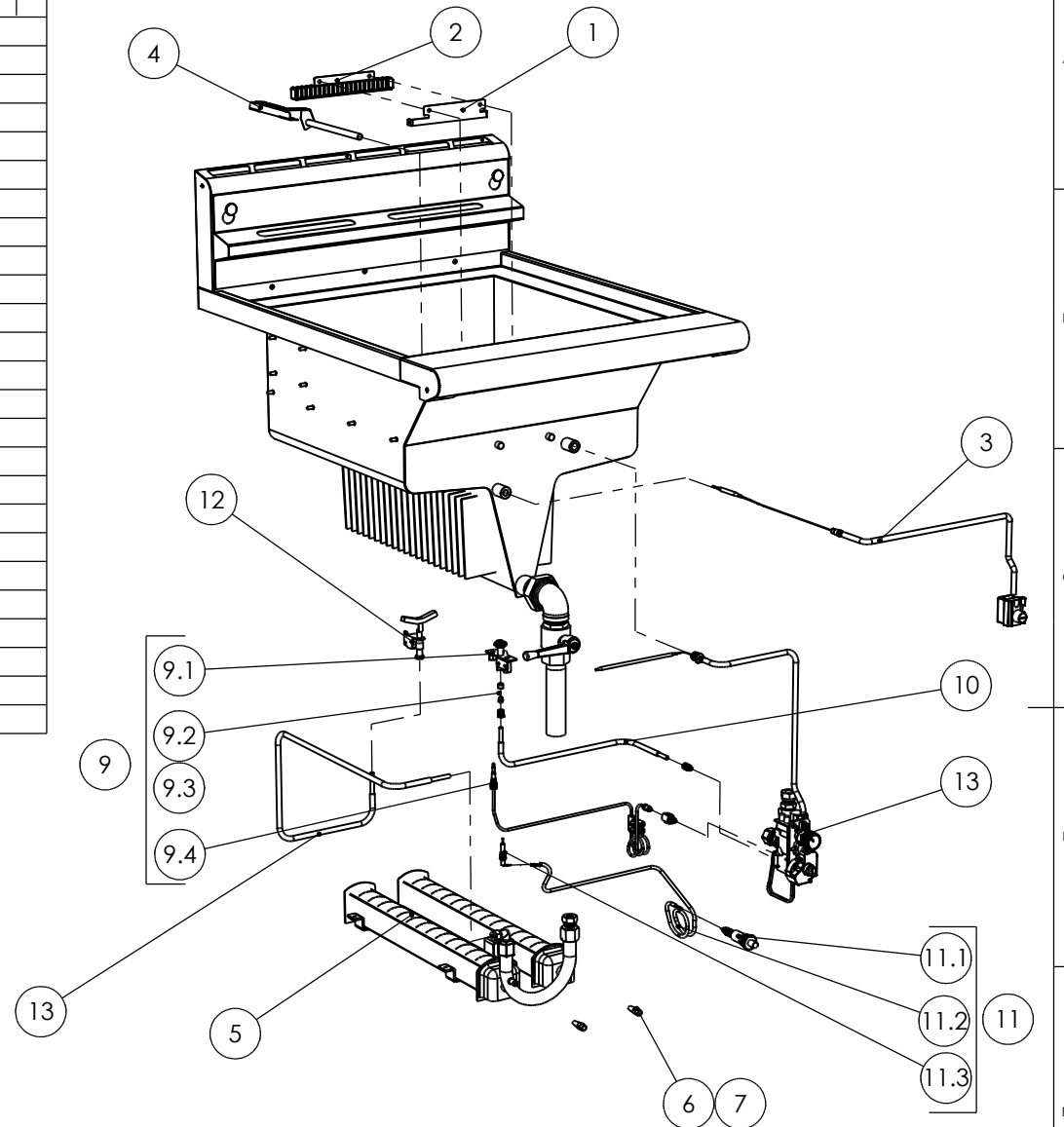
WEIGHT: 148015.49g



DRAWN: I.JAMES	PRODUCT	G3860F FRYER	
DATE: 18/08/17	TITLE	SPARES - OIL CONTAINER	
SCALE: 1:7.5	DRAWING NUMBER	AD54752	ISSUE
MATL:	THICKNESS:	FINISH:	A
BIN No:	PART No:		

© NO REPRODUCTION OR PUBLICATION OF THIS DRAWING MAY BE MADE AND NO ARTICLE MAY BE MANUFACTURED OR ASSEMBLED IN ACCORDANCE WITH THIS DRAWING WITHOUT PRIOR WRITTEN CONSENT. THIS PROHIBITION IS A TERM OF ANY CONTRACT RELATING TO THIS DRAWING. RIGHTS RESERVED UNDER THE COPYRIGHT ACT 1956 AS AMENDED BY THE DESIGN COPYRIGHT ACT 1968

ITEM	DESCRIPTION	SPARES No
1	OPERATING STAT PHIAL MOUNTING BRACKET	535580006
2	OPERATING STAT PHIAL COVER	535580007
3	SAFETY THERMOSTAT	535580008
4	SAFETY STAT PHIAL MOUNT BRACKET	535670018
5	BURNER ASSEMBLY (NO INJECTORS)	535580009
6	BURNER INJECTORS (x 2) - NAT GAS	535580010
7	BURNER INJECTORS (x 2) - PROPANE	535580011
8	GAS CONTROL VALVE C/W FITTINGS - NAT & PROPANE	535580012
9	PILOT ASSEMBLY - NAT & PROPANE	535580013
9.1	3 FLAME PILOT	530760007
9.2	PILOT INJECTOR - NAT GAS	537350013
9.3	PILOT INJECTOR - PROPANE	537350014
9.4	THERMOCOUPLE	535670024
10	PILOT PIPE C/W FITTINGS	535580014
11	SPARK IGNITOR ASSEMBLY	535670026
11.1	SPARK IGNITOR	535010000
11.2	SPARK IGNITOR CABLE	535710115
11.3	SPARK ELECTRODE	537350007
12	CROSS LIGHTER ASSEMBLY - NAT & PROPANE	535670027
12.1	CROSS LIGHTER INJECTOR - NAT GAS (NOT SHOWN)	535710091
12.2	CROSS LIGHTER INJECTOR - PROPANE (NOT SHOWN)	531300070
13	CROSS LIGHTER PIPE C/W FITTINGS	531300130
14	GAS GOVERNOR - NAT GAS (NOT SHOWN)	535480015



PRODUCTION ISSUE

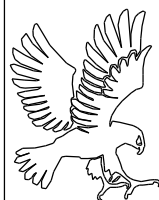
ISSUE	MOD No	ALTERATION	DRAWN BY	DATE
A	1677	PRODUCTION ISSUE	I.JAMES	27/03/17

IF IN DOUBT ASK
DO NOT SCALE
FIRST ANGLE PROJECTION

UNLESS OTHERWISE SPECIFIED:
DIMENSIONS ARE IN MILLIMETERS
TOLERANCES:
LINEAR: ±0.5mm
ANGULAR: ±0.5 DEG

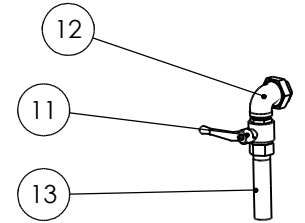
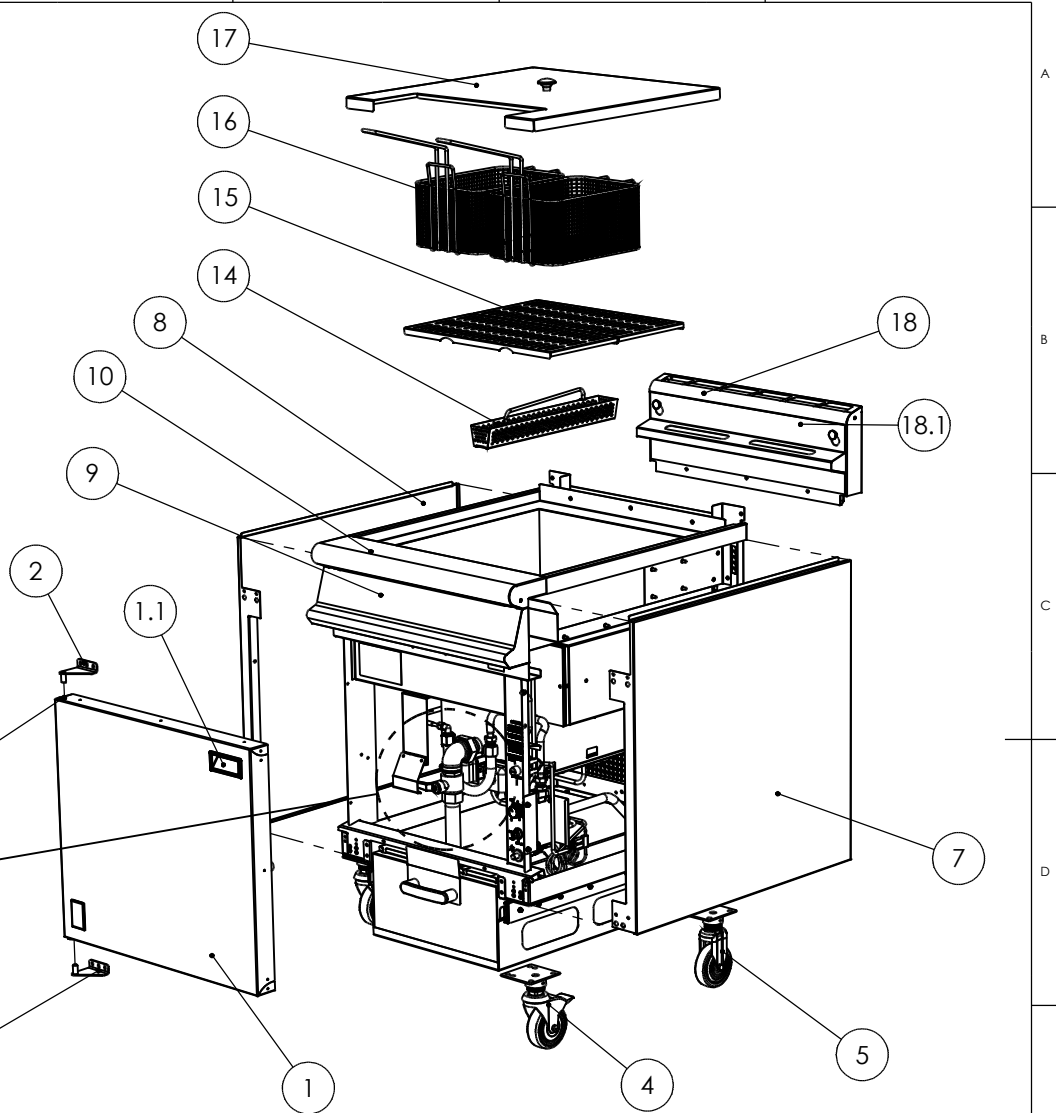
DEBUR AND
BREAK SHARP EDGES

WEIGHT: 121898.04g



DRAWN: I.JAMES	PRODUCT	G3860B FRYER	
DATE: 20/02/17	TITLE	SPARES - CONTROLS	
SCALE: 1:7.5	DRAWING NUMBER	AD54310	ISSUE
MATL:	THICKNESS:		A
BIN No:	FINISH:		
	PART No:		

ITEM	DESCRIPTION	SPARES No
1	DOOR ASSEMBLY	535580000
1.1	DOOR HANDLE	736010020
1.2	DOOR HINGE BUSH (x 2)	536060036
2	DOOR HINGE - TOP	535200006
3	DOOR HINGE - BOTTOM	535200007
4	CASTOR - BRAKED (x 2)	536430110
5	CASTOR - FIXED (x 2)	731350014
6	CONTROLS INDICATION LABEL	535580001
7	OUTER SIDE PANEL - RH	535580002
8	OUTER SIDE PANEL - LH	535580003
9	CONTROL PANEL	535580004
10	HOB/PAN ASSEMBLY C/W INSULATION & DRAIN VALVE	535580031
11	DRAIN VALVE	535580043
12	1" UNION ELBOW	535580032
13	DRAIN PIPE	535580033
14	PAN STRAINER	535670009
15	FISH PLATE	535680005
16	BASKET	531312010
17	DUST COVER	535680006
18	FLUE ASSEMBLY	535680007
18.1	BASKET HANGER	535680008



PRODUCTION ISSUE

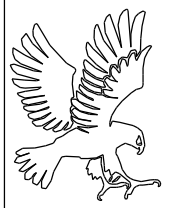
ISSUE	MOD No	ALTERATION	DRAWN BY	DATE
A	1677	PRODUCTION ISSUE	I.JAMES	27/03/17

IF IN DOUBT ASK
DO NOT SCALE
FIRST ANGLE PROJECTION

UNLESS OTHERWISE SPECIFIED:
DIMENSIONS ARE IN MILLIMETERS
TOLERANCES:
LINEAR: ±0.5mm
ANGULAR: ±0.5 DEG

DEBUR AND
BREAK SHARP EDGES

WEIGHT: 120434.36g



DRAWN: I.JAMES	PRODUCT	G3860B FRYER	
DATE: 21/02/17	TITLE	SPARES - MAIN BODY	
SCALE: 1:10	DRAWING NUMBER	AD54311	ISSUE
MATL:	FINISH:		A
THICKNESS:	PART No:		
BIN No:			

© NO REPRODUCTION OR PUBLICATION OF THIS DRAWING MAY BE MADE AND NO ARTICLE MAY BE MANUFACTURED OR ASSEMBLED IN ACCORDANCE WITH THIS DRAWING WITHOUT PRIOR WRITTEN CONSENT. THIS PROHIBITION IS A TERM OF ANY CONTRACT RELATING TO THIS DRAWING. RIGHTS RESERVED UNDER THE COPYRIGHT ACT 1956 AS AMENDED BY THE DESIGN COPYRIGHT ACT 1968